

Concept lookbook
To be reviewed

Ravienne muse

Adamyia srivastava

06 March '25

Beta #01

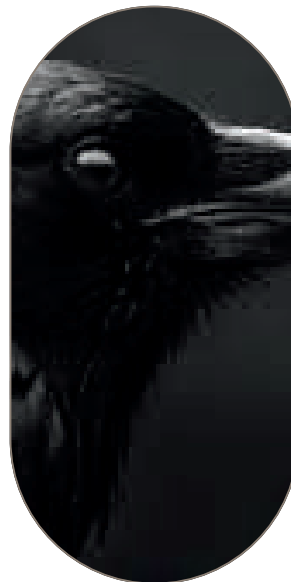


**Raven have a very distinct
shape and structural
composition**

I studied their movements, their poised
stillness, and the fluidity of their wings in
flight, trying to translate that essence onto
paper



silhouette study



•

* all imagery used are from
<http://www.copetersen.com> and
are free for public use

Initial silhouettes

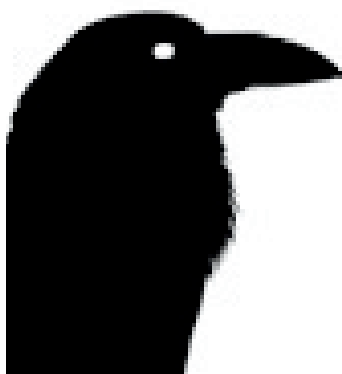
01



02



03



04





Meet, Adorable doll

For the current wordmark logo of Ravienne Muse, I have chosen to use the font Adorable Doll, a gothic-style typeface that truly embodies the brand's essence of sophistication, mystery, and elegance. Its intricate letterforms carry a sense of vintage refinement while maintaining a bold and distinctive presence. I felt that this typeface not only sets Ravienne Muse apart from other thrift-based brands but also pairs seamlessly with the raven silhouette featured in the Beta 01 logo I designed. The interplay between the type and imagery enhances the brand's vampy, curated aesthetic while maintaining a sense of accessibility.

That being said, I am fully open to modifying the typography as needed to better align with your vision. If any refinements are required—whether it's adjusting letter spacing, tweaking certain elements, or even integrating additional design flourishes—I can adapt the wordmark to fit the evolving identity of Ravienne Muse. The goal is to ensure that the final logo not only reflects the brand's core values but also resonates with the audience in a striking yet authentic way.

Legal documents attached of said
font and is free for public use

legal of adorable doll

Adorable Doll Ver1.00 --Updated on 2012/11/05

<Recorded characters>
Half-width alphanumeric characters, symbols (some)

Thank you for downloading this font.

*This file was created using TTEdit from Musashi System (<http://opentype.jp>).

If you sell this font in font products, etc.,

Please note that you will need to write the font creation software.

For more information, please see the following page of Musashi System.

<http://opentype.jp/credit.htm>

・ There is no need to link or report when using the fonts.

・ Embedding in games, e-books, smartphones, etc.

Use as a web font and for commercial purposes are also welcome.

・ Secondary distribution and reproduction of font data (ttf file) is also possible,

Please be sure to include a link or URL to the top page.

*If the font is "bundled" with a game, app, etc. (if the font is not the main distribution item),
there is no need to report or link.

- Modifying the font data (ttf file) itself is prohibited.

→ It is OK to modify the outline when using fonts for illustrations, logos, etc. Also, on the
condition that you do not change the outline or font information, etc.

Format conversion to ttf-otf etc. is also OK.

・ Please refrain from registering trademarks such as logos that use the fonts as is.

For further details, please refer to the site's terms of use and Q&A.

★Font Terms of Use: <http://www.asterism-m.com/font/rules.php>

★Q&A: <http://www.asterism-m.com/faq/>

If you have any questions about fonts, please contact us.

Author: Satsuyako
Email: brilliant@asterism-m.com

If you use the fonts on this site and any problems occur,

We are not responsible for any damages. Please use this site with your consent.

Adorable Doll Ver1.00 --2012/11/05更新

<収録文字>
半角英数、記号（一部）

このたびはフォントをダウンロードして頂き誠にありがとうございます。

★本ファイルは武蔵システム（<http://opentype.jp>）のTTEditを使って作成しました。

このフォントをフォント製品などで販売する場合は、
フォント作成ソフトの記述が必要となりますのでご注意ください。

詳しくは武蔵システム様の下記ページをご確認ください。

<http://opentype.jp/credit.htm>

・ フォントのご利用の際、リンク・報告等の必要はありません。

・ ゲーム、電子書籍、スマートフォンなどへの埋め込みや
WEBフォントとしてのご利用、商用利用も大歓迎です。

・ フォントデータ（ttfファイル）の二次配布や転載も可能ですが、
必ずトップページへのリンクかURL掲載をお願いします。

＊ゲームやアプリ等への「同梱」の場合（フォントがメインの配布物ではない場合）、
報告やリンクの必要はありません。

・ フォントデータ（ttfファイル）自体の改変は禁止とさせていただきます。

→イラストやロゴなどにフォントを使用した場合のアウトライン修正はOKです。
また、アウトラインやフォント情報などを改変しないという前提で
ttf→otfなどへのフォーマット変換もOKです。

・ フォントをそのまま使用したロゴなどの商標登録はご遠慮下さい。

その他、詳細はサイトの利用規約やQ&Aを参照してください。

★フォント利用規約: <http://www.asterism-m.com/font/rules.php>

★Q&A: <http://www.asterism-m.com/faq/>

フォントに関して何かありましたらご連絡下さいませ。

作者: さつやこ
メール: brilliant@asterism-m.com

当サイトのフォントを利用し、万が一トラブルが発生しても
責任は負いかねます。ご了承の上でご利用下さい。

Beta #1



The Ravienne Muse logo I designed embodies the essence of the brand—elegance, mystery, and transformation. At its core, the logo features a striking raven silhouette, a symbol of intelligence, allure, and the ever-evolving nature of fashion. The raven is depicted reaching for a rose, a nod to beauty, refinement, and the delicate balance between edge and sophistication. Encasing this imagery is a shield-like frame, lending a sense of heritage, prestige, and timelessness, reinforcing Ravienne Muse as more than just a thrift store, but a brand with a strong identity and purpose.

The black-and-white split composition further enhances the contrast between light and dark, tradition and modernity, mirroring the duality that Ravienne Muse embraces—accessible yet curated, vintage yet fresh. The typography, using the gothic-inspired Adorable Doll font, complements the design by adding an old-world charm while maintaining a bold, contemporary appeal.

This logo is a visual representation of what Ravienne Muse stands for: curated thrift that transcends time, bringing a sense of mystery, sophistication, and authenticity to those who wear it. As the brand evolves, this identity will continue to shape and inspire its journey forward.



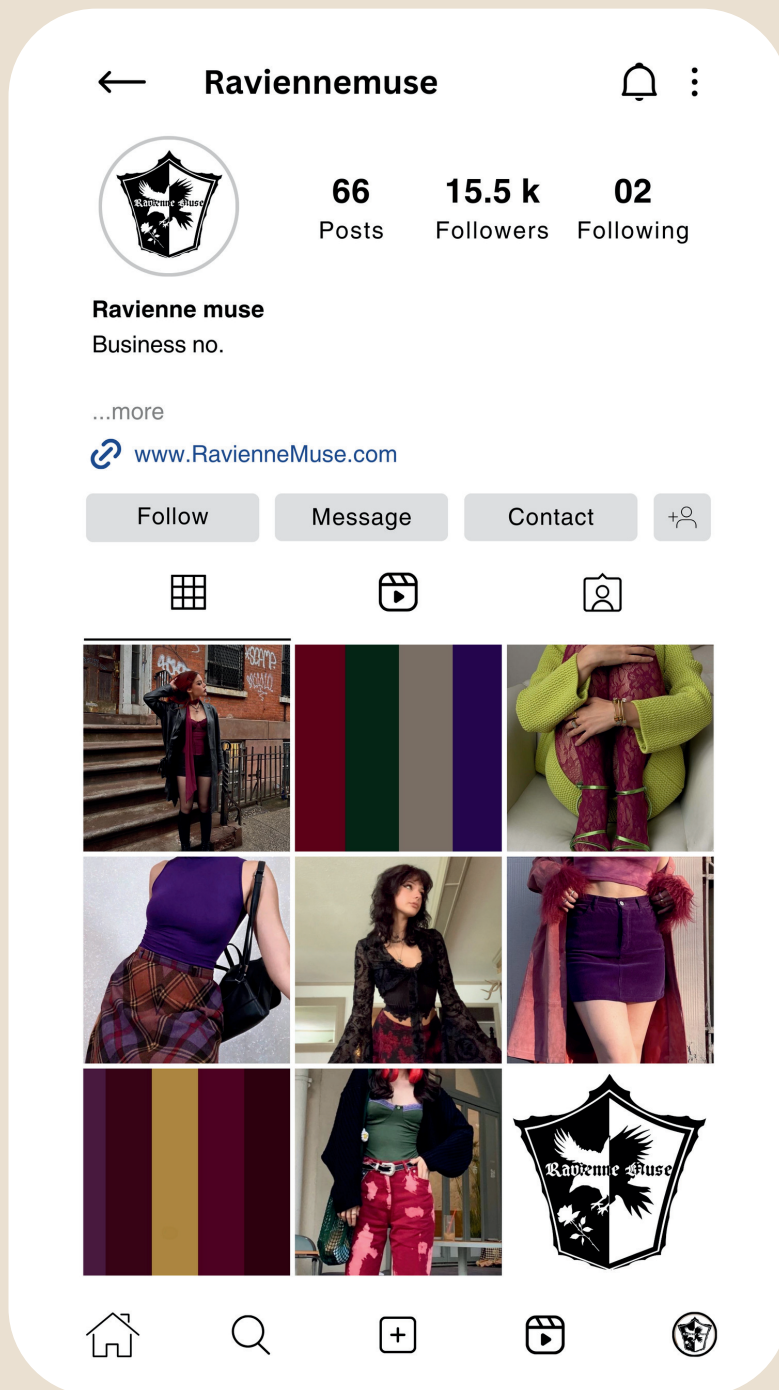
Lookbook

A view into what it would look like on various surfaces.



Looking forward to your input

Ravienne Muse



Adamyasrivastava